



ASPEN | CROSSING

# The 1887 Diefenbaker Dining Car Holiday Drink Menu

## Hot & Cold Non-Alcoholic Beverages

Coffee 3.00  
Hot Tea 3.00  
Hot Chocolate 3.00  
Lemonade 3.00  
Iced Tea 3.00  
Canned Pop 3.00  
Pepsi, Diet Pepsi, Ginger Ale, 7up, Club Soda, Root beer  
Milk: Glass 4.00, Kids Size 2.00  
Chocolate Milk: Glass 4.50, Kids Size 2.50  
Shirley Temple: Glass 4.50, Kids Size 2.50  
Juice: Glass 3.00, Kids Size 1.50  
Apple, Cranberry, Orange, Pineapple, and Clamato

### Hi-Ball 1 oz

Premium 7.50 , Regular 6.50

### Beer Bottle 341 mL

Domestic Beers 7.00  
Canadian, Kokanee, Budweiser, Bud Light, Coors Light,  
Coors Original, Alexander Keith's, Old style Pilsner  
  
Import Beer 7.50  
Corona, Steam Whistle, Guinness Draught, Stella Artois,  
Michelob Ultra

### Ciders & Coolers 355 ml 8.00

### Shots 6.00, Shooters 7.00 (1oz)

Please ask your server!

### White Wine

Matua, Hawkes Bay Sauvignon Blanc, 2019  
Glass (5oz) 9.00, Bottle 35.00  
  
Gray Monk Pinot Blanc  
Glass (5oz) 13.00, Bottle 55.00

## Rose & Sparkling Wine

50th Parallel Estate, Pinot Noir Rose, 2020  
Glass (5oz) 7.00, Bottle 75.00

Riondo Prosecco Spumante, Italy  
Glass (5oz) 10.00, Bottle 40.00

## Red Wine

Chevalier De Dyonis, Pinor Noir  
Glass (5oz) 9.00, Bottle 35.00

Carnivour, Shiraz 2019  
Glass (5oz) 12.00, Bottle 50.00

19 Crimes Cali Red 2020, Cabernet Sauvignon  
Glass (5oz) 14.00, Bottle 60.00

Les Meysonniers M. Chapoutier, 2019  
Bottle 70.00

## Specialty Coffee, Tea & Hot Chocolate 8.00

Canadian Coffee: Crown Royal Rye, Maple Syrup, Coffee, Whipped Cream (1oz)  
  
Bavarian: Peppermint Schnapps, Kahlua, Coffee, Whipped Cream (2oz)  
  
Monte Cristo : Grand Marnier, Kahlua, Coffee, Whipped Cream (2oz)  
  
Irish Cream: Baileys, Coffee, Whipped Cream (1oz)  
  
Blueberry Tea: Amaretto, Grand Marnier, Orange Pekoe Tea (2oz)  
  
Malibu Hot Chocolate: Malibu Rum, Cacao White, Hot Chocolate, Whipped Cream (1oz)  
  
Peppermint Hot Chocolate: Peppermint Schnapps, Vanilla Extract, Hot Chocolate (1oz)



ASPEN CROSSING

## SEASONAL 2024 SPECIALTY COCKTAILS 10.00

### **Rudolph's Punch**

Amber rum, pineapple juice, orange juice, lime juice  
garnish with strawberry marshmallow Santa hat

### **Reindeer Gin Rickey**

Gin, soda water, lime juice garnish with strawberry  
marshmallow Santa hat

### **North Pole Paralyzer**

Vodka, kahlua, pepsi, milk garnish with strawberry  
marshmallow Santa hat

### **Santa Sparkler**

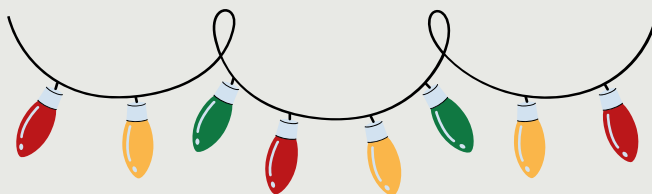
Cranberry juice, champagne, grenadine garnish with  
sugar rim & strawberry marshmallow Santa hat

### **Santa's Lemonade**

Brandy, cointreau, lemonade garnish with strawberry  
marshmallow Santa hat

### **Grinch Mimosa**

Orange juice, blue curacao, champagne garnish with  
sugar rim & strawberry marshmallow Santa hat



ASPENCROSSING.COM

TAG US ON INSTAGRAM: @ASPENCROSSING